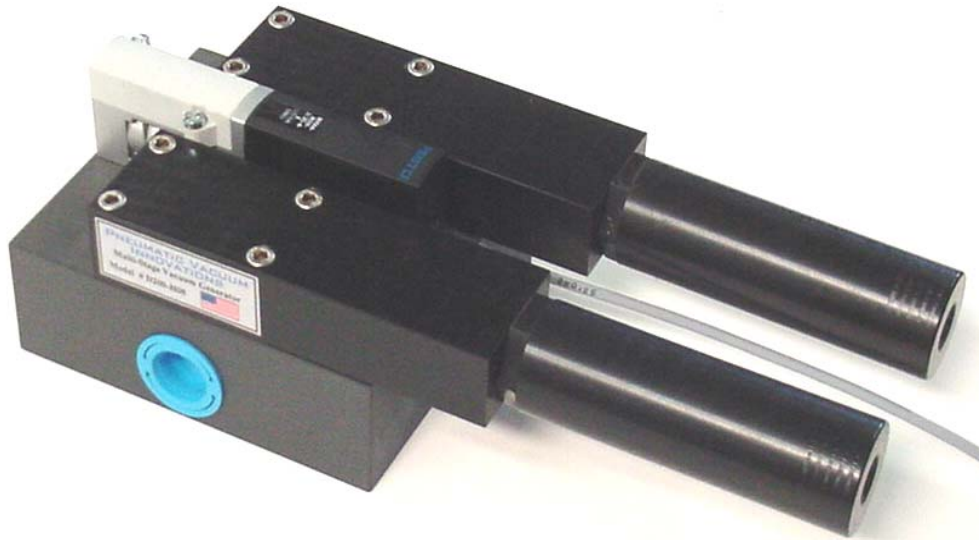


DX400 VACUUM MANIFOLD ASSEMBLY DATA SHEET



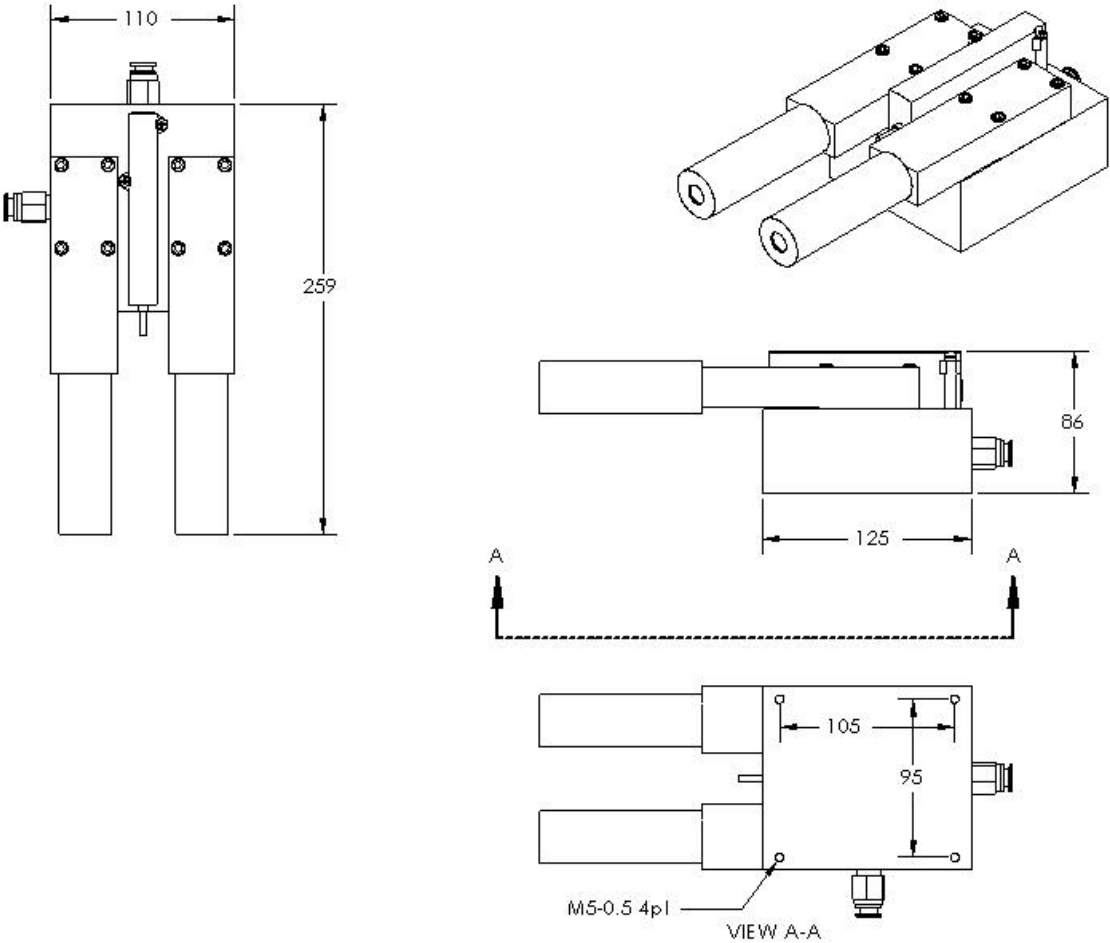
The DX400 Vacuum Manifold Assembly has been designed to address industry's varied vacuum demands. The manifold contains two tandem vacuum generators that are actuated by a single adjacent valve. The attached direct acting solenoid valve provides external electrical control. There are two tandem non-return vacuum valves built into the manifold body. All components are direct mounted utilizing O ring connections thus allowing servicing to be performed easily with simple tools.

Specifications: article 3632A

Quantity Generators:	2
Generator types:	D200-H08 Multi Stage D200-H08 Multi Stage
Ultimate Vacuum:	27 in-hg
Induced Flow:	24 scfm
Air consumption:	12.8scfm @ 60psi
Operating Pressure:	60 – 75 psi
Noise Level:	62db (open flow) 55db (closed flow)
Valve :	24 VDC, 5.6 W, N.C., IP65, Manual Override
Materials:	Acetal, PVC, Stainless Stl, Alum
Ports:	12mm Vacuum, 8mm Pressure (tubing)
Mounting:	95mm by 105mm 5mm treads F
Mass:	1.75 Kg

Pneumatic Vacuum Innovations Brea, California
888-281-4784
pg 1/2

Dimensional data



All Dimensions in Millimeters

Pneumatic Vacuum Innovations Brea, California
888-281-4784
Pg 2/2